

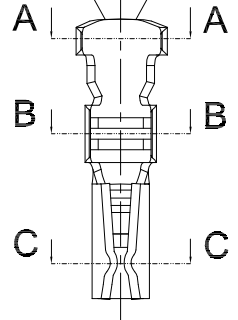
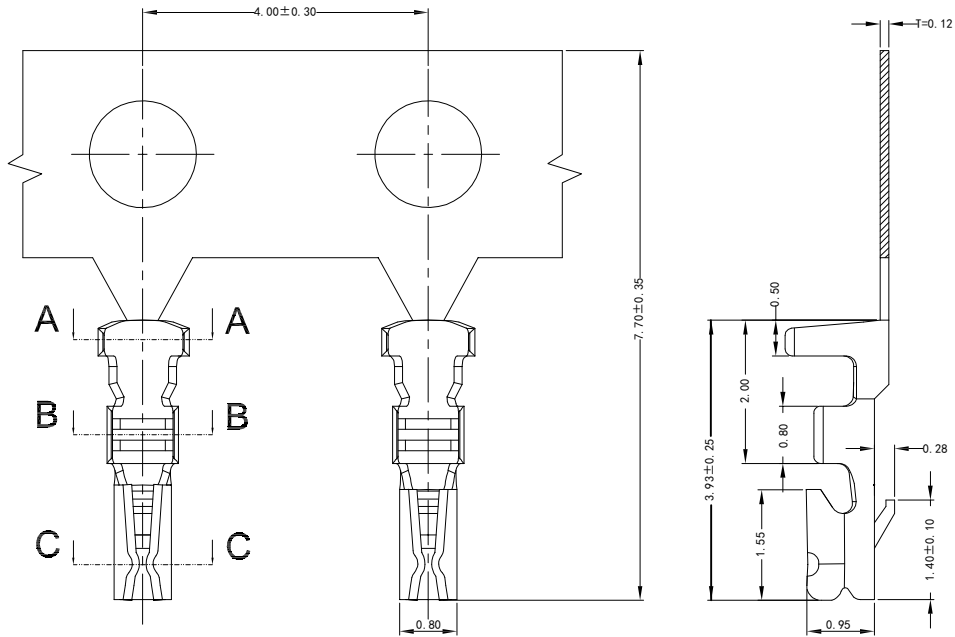
5

4

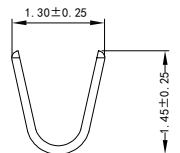
3

2

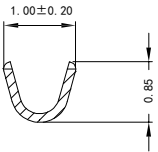
1



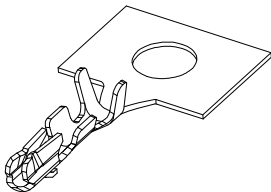
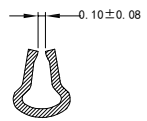
SECTION C-C  
SCALE 1:1



SECTION A-A  
SCALE 1:1



SECTION B-B  
SCALE 1:1



- Specifications :
- Voltage rating: 125V AC / DC
  - Current rating: 1A AC / DC
  - Withstanding voltage: 500V AC/minute
  - Temperature range: -25°C~+85°C
  - Insulation resistance: ≥100MΩ
  - Contact resistance: ≤20mΩ
  - After environmental testing: ≤40mΩ
  - AWG: #28-#32

1009 T P X - 2 X - X

代码 间距  
T 示意端子  
P 磷铜  
B 黄铜  
E 合金铜  
X 普通脚  
H 高脚  
X 普通  
L 长  
S 短  
X 公端  
G 母端  
C 示意90°  
S 示意180°

0 素材  
2 镀锡先冲后镀  
3 镀锡先镀后冲  
4 镀全银(镀后冲)  
4.2 镀全银先冲后镀  
5G、15G 示意镀金5U\*或15U\*、1G 示意镀金1U\*

东莞市平达电子科技有限公司

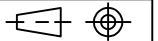
料号PART NO: 1009TPX-2X-G

品名 TITLE: 1002-T

材料: 单位: MM 包装规格 比例: 1:1

日期版次 REVISION 日期 DATE 变更内容 DESCRIPTION 核 准 APPROVALBY 制图: 审核: 核准: 日期: 2021.10.25

一般公差 GENERAL TOLERANCE	X.X ±0.15
	X.XX ±0.10
ANGLE	±1°



5

4

3

2

1

SL