

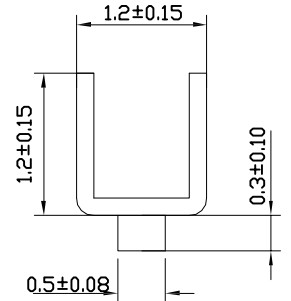
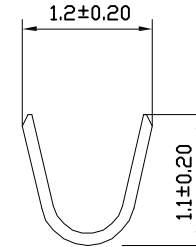
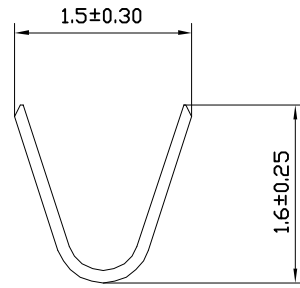
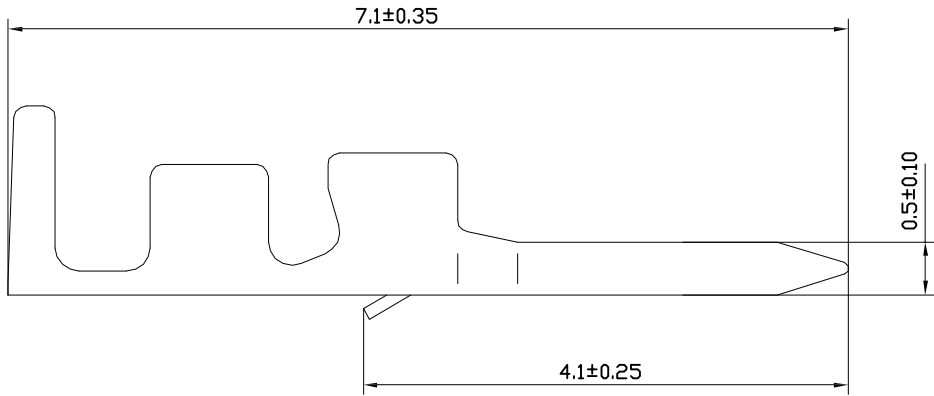
5

4

3

2

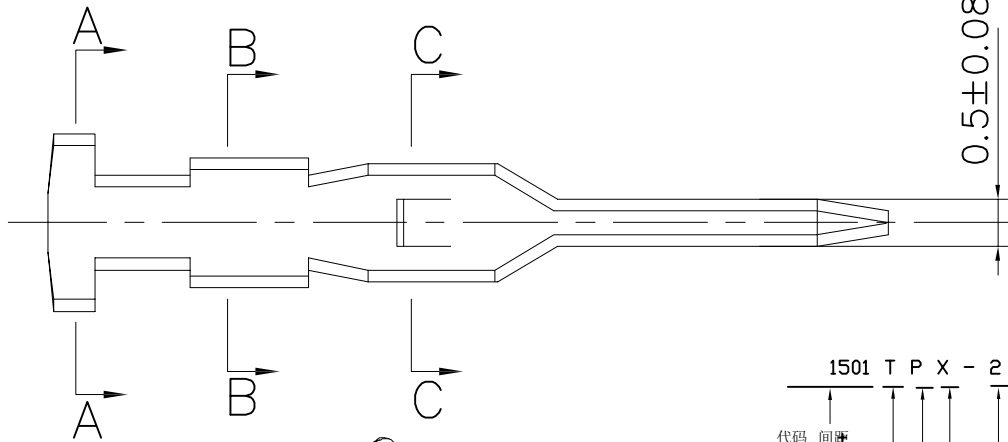
1



A-A

B-B

C-C



1501 T P X - 2 X - X

代码 间隔

T 示意端子

X 公端
G 母端

X 普通
L 长
S 短

0 素材
2 镀锡先冲后镀
3 镀锡先镀后冲
5G、15G 示意镀金5U* 或15U*, 1G 示意镀金1U*

X 普通脚
H 高脚

P 磷铜
B 黄铜
E 合金铜

- 1、Current rating: 1A AC\DC (AWG #26)
- 2、Voltage rating: 50V AC\DC
- 3、Temperature range: -25°C to 85°C
- 4、Contact resistance: Initial value/20mΩmax
Electrical properties
- 5、Insulation resistance: 100MΩmin
- 6、Withstanding voltage: 500V AC/ minute
- 7、Applicable wire: AWG #30 to #26

Environmental controls

- 1、Banned contains SS - 00259 are restricted substances.
- 2、The corresponding issued by SGS or ITS icp-aes data,
Not the material in a list, and validity.

东莞市平达电子科技有限公司

料号PART NO: 1501TPX-2X-X

品名 TITLE: ZH1.5-T(公)

材料:

单位: MM

包装规格:

比例: 1:1

制图:

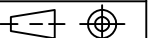
审核:

核准:

日期: 2022. 4. 18

日期版次 REVISION	日期 DATE	变更内容 DESCRIPTION	核 准 APPROVALBY

一般公差
GENERAL TOLERANCE
X.X ±0.30
X.XX ±0.25
ANGLE ±1°



6

5

4

3

2

1